



*Taking you higher*

## ELEVATOR COMPONENTS

Disclaimer - Designer / Images / Specifications / Colors can vary from the actual product installed.

### CORPORATE OFFICE:

635, Mistry Building, 2nd Floor,  
Jagannath Shankarsheth Road,  
Mumbai - 400 002, India.

Phone - +91 22 22067503 / 22000816

Fax - +91 22 22000804

email - [concele@vsnl.com](mailto:concele@vsnl.com)

[info@concordelevator.co.in](mailto:info@concordelevator.co.in)

[www.concordelevator.in](http://www.concordelevator.in)

[www.concordelevator.co.in](http://www.concordelevator.co.in)



*Taking you higher*

## CABINS AND BUTTONS





CONCORD ELEVATOR PVT LTD was established in January 1993 by our founder Chairman & Managing Director Mr. D.F. Palkhivala, whose experience in the Elevator Industry is since the year 1958.

CONCORD'S strong commitment to EXCELLANCE IN DESIGN AND PERFORMANCE through CONCORD'S in-house design, development and manufacturing programme for Elevator Component CONCORD today manufactures a wide range of elevators products, as follows:

1. **CONCORD HEAVY DUTY SIDE SLIDING AUTOMATIC DOOR SYSTEMS** - CONCORD automatic door systems are heavy-duty elevator AC VVVF door systems, cover a wide range of openings of 700mm wide X 2000mm high to 5000mm wide X 5000mm high. The CONCORD heavy-duty elevator door automatic door systems are available in an unimaginable range of finishes of Mild Steel in prime/ paint / powder coated finishes; Stainless Steel in hair line / natural mirror / colour mirror / natural etched / colour etched; full glass panels / frame glass panels.
2. **CONCORD FIXTURES** - CONCORD fixtures are cost effective fixtures available in two shapes – Round (32mm dia) buttons and Square elegant & large buttons (44mm sq) with a range of displays – Segment displays, Dotmatrix displays, LCD displays and also Plasma displays.
3. **CONCORD CAR & COUNTERWEIGHT FRAME SET** - CONCORD car & counterweight frame set are designed for elevators with payload capacities ranging from 204Kg to 5000Kg with instantaneous / progressive safety gear for travel speed from 0.20 M/Sec to 2.50 M/Sec and a wide range of guide shoes to chose from.  
CONCORD also has a wide range of "L" car frame with payload capacities ranging from 204Kg to currently 1000Kg with instantaneous / progressive safety gear for travel speed from 0.20 M/Sec to 1.0 M/Sec
4. **CONCORD MANUALLY OPERATED DOORS** - CONCORD manually doors side sliding two panel telescopic doors and CONCORD manually operated Swing doors, both available in Mild Steel in prime/ paint / powder coated finishes and in Stainless Steel in hair line finish.
5. **CONCORD TRADE** - CONCORD component trading division will configure and procure elevators components internationally for your specific elevator component requirements.  
CONCORD trading division will configure and procure complete Escalators, walkways / travolators, stair lifts for your requirements.



STAINLESS STEEL



MONO

CONCORD'S elegant standard cabin interior designs incorporate a simple elegant and open feel, enhancing the overall travel experience of the passengers. We emphasize on simplistic and minimalistic contemporary design concepts that add to the elegance of the elevator.



PEARL BLUE



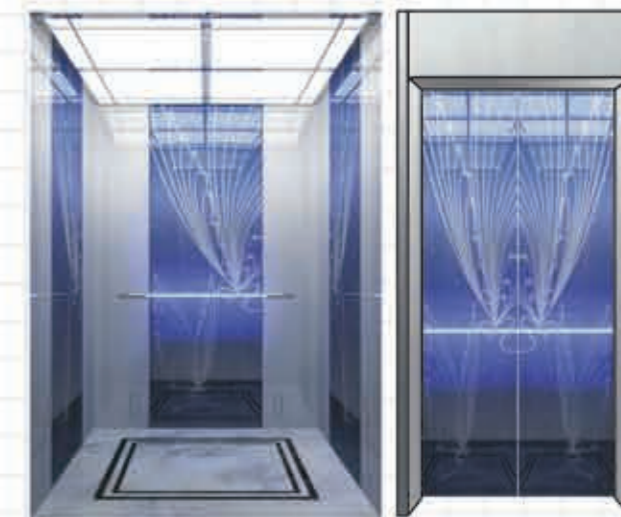
EMERALD GREEN



RUBY RED



Ti - Gold etched designed and Hairline finish custom designed cabin and door



Polychrome finish custom designed cabin and door panels

Our design team is capable of generating newer, niche interiors designs and patterns for your cabin requirements, ensuring that your elevator experience is truly "one-of-a-kind".



Ti - Mirror etched finish cabin and door panels



Hairline and Mirror finish etched Stainless Steel cabin and door panels



Mirror etched finish etched Stainless Steel cabin and door panels



PEARL



CRESCENT

CONCORD Panoramic Elevators add to the glamour of your property and building due to their beautiful finishes, elegant and graceful designs and layouts incorporating large areas of engineered safety glass.

CONCORD Panoramic Elevators are appreciated for their beauty, elegance, grace and comfort by the passengers traveling in them as well as by people seeing them from within the atrium or along the elevation or facade of the buildings that they are installed in.



GLOBE

CONCORD also has the capabilities to design and provide FULL GLASS Panoramic elevators of any geometrical shape, including a FULL ROUND GLASS elevator with ROUND GLASS DOORS.



TRIVISION-F



PENTA

CONCORD Panoramic elevators can be designed in various shapes and finishes. they can be customized to fit the requirements of the buyer / user.



UNIVISION



LUNAR



TRIVISION-A



SUNBEAM



**FABRICATION:**

Steel powder coated / paint finish

Stainless steel – Hairline/ No.4, Mirror finish, Etched design,  
Coloured finish.

Steel tube structure for unrestricted visibility - powder coated  
/ paint finish

Stainless steel structure for unrestricted visibility – Matt finish,  
Mirror finish.

**CEILING:** See through glass

**LIGHTING:**

Energy efficient PL light fixtures  
LED fixtures

**FLOORING:**

PVC Mat

Stone (granite / marble) –  
single colour, water jet cut  
design pattern Glass



IEEEXPO 2010 DISPLAY

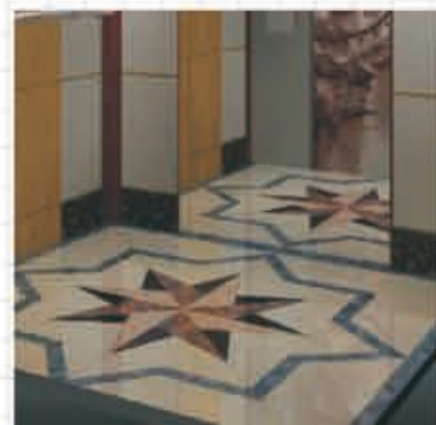
GLOBE





CEILINGS

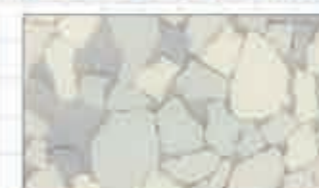
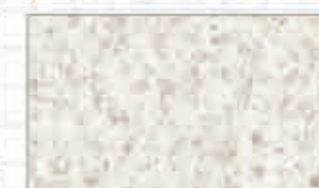
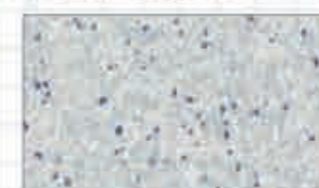
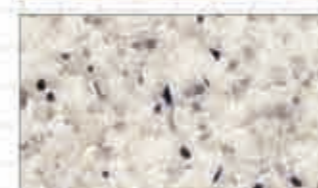
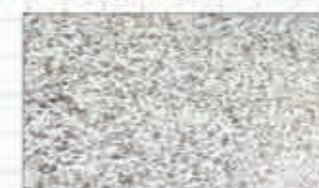
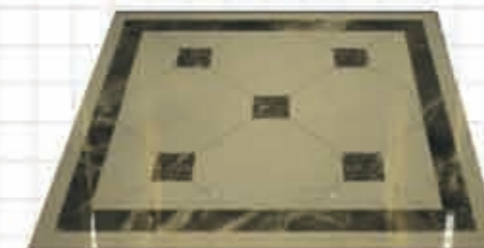
DECORATIVE  
FALSE CEILINGS  
FOR PASSENGER  
AND PANORAMIC  
ELEVATORS



FLOORING



DECORATIVE FLOORINGS  
DESIGNS FOR PASSENGER  
AND PANORAMIC ELEVATORS



HAND RAILS

HANDRAILS AND RAILINGS FOR PASSENGER  
AND PANORAMIC ELEVATORS

